

MICROFOCUS X-RAY TUBES

PRODUCT LINE TC



Product image



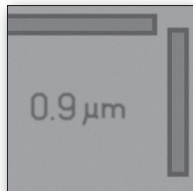
Microfocus X-ray tube XWT-225-TC



Microfocus X-ray tube XWT-160-TC



Turbo pump with automatic venting valve



JIMA resolution 0.9 μm

Technical data

Data	Product line TC			
Max. voltage (kV)	160	190	225	240
Min. voltage (kV)	20	20	20	20
Max. current (mA)	1.0	1.0	1.0	1.0
Min. current (mA)	0.05	0.05	0.05	0.05
Max. power, target (Watt)	10	10	10	10
JIMA resolution (μm)	0.9	0.9	0.9	0.9
Tube type	Transmission			
Target type	High Brightness			
Target material (substrate/active layer)	Beryllium / Tungsten			
Min. focus-object-distance (FOD, mm)	0.25	0.25	0.25	0.25
Opening angle (approx. °)	160	160	160	160
Mounting length incl. 90° HV plug (mm)	718	718	809	901
Tube weight (approx. kg)	37	37	58	58

Highlights

- ▶ JIMA resolution 0.9 microns (μm)
- ▶ Three modes of operation: *Submicron, Microfocus, High Power*
- ▶ Automatic Intensity Control (AIC) for continuous intensity of radiation
- ▶ Automatic tube calibration for optimum performance
- ▶ Easy maintenance with adjusted ready-to-use click-in cathodes and automatic tube venting
- ▶ Unlimited lifetime

See our new catalogue **Options and Accessories** to find additional auxiliary equipment for your X-RAY WorX tube.

Scope of delivery

- ▶ Open microfocus X-ray tube with transmission target, turbo vacuum pump, vacuum gauge, and electronic drive unit
- ▶ High voltage generator and high voltage cable
- ▶ Pre-vacuum pump with vacuum hose
- ▶ Tube controller, power supplies, and safety relays on 19" mounting panels
- ▶ Set of cables for electrical connection of X-ray tube and components
- ▶ Spare parts case, documentation, and operating software

Product Line TC

JIMA resolution

High Brightness target		Voltage [kV]				
		70	90	110	150	
Mode / Target power [W]	Submicron	0.5	0.9	0.9	1.0	1.5
		0.7	0.9	0.9	1.0	1.5
		1.0	0.9	0.9	1.5	1.5
Microfocus	1.5	2.0	2.0	2.0	2.0	
	2.0	2.0	2.0	2.0	2.0	
	3.0	2.0	2.0	2.0	2.0	
	4.0	2.0	2.0	2.0	2.0	

JIMA resolution in microns (μm)

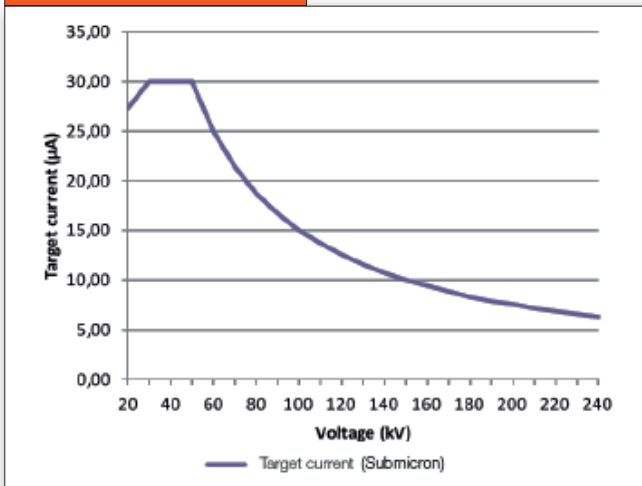
JIMA resolution

High Energy target*		Voltage [kV]						
		60	100	150	190	225	240	
Mode / Target power [W]	Sub-micron	0.5	0.9	0.9	0.9	0.9	0.9	0.9
		1.0	0.9	0.9	0.9	0.9	0.9	0.9
		1.5	1.5	0.9	0.9	0.9	0.9	0.9
Microfocus	1.0	2.0	2.0	2.0	2.0	2.0	2.0	
	2.0	2.0	2.0	2.0	2.0	2.0	2.0	
	3.0	2.0	2.0	2.0	2.0	2.0	2.0	
	5.0	3.0	2.0	2.0	2.0	2.0	2.0	
	7.0	3.0	2.0	2.0	2.0	2.0	2.0	
	10.0	4.0	2.0	2.0	2.0	2.0	2.0	
High Power	10.0	7.0	5.0	4.0	3.0	3.0	3.0	
	17.5	10.0	7.0	6.0	6.0	6.0	6.0	
	25.0	15.0	10.0	7.0	7.0	7.0	7.0	

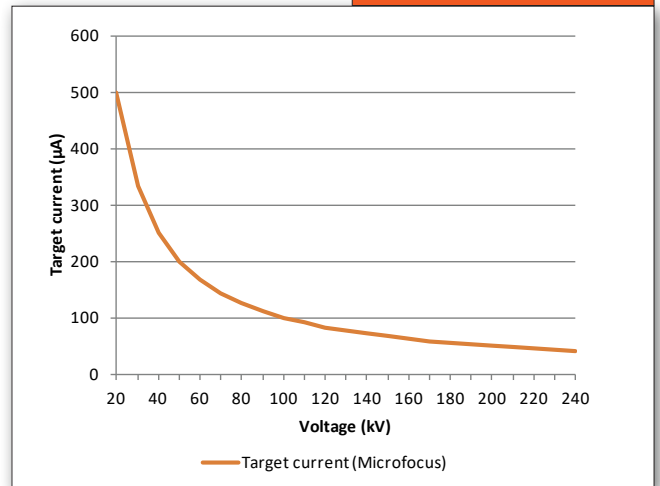
JIMA resolution in microns (μm)

* Option

Power rating chart



Power rating chart



Tube dimensions

