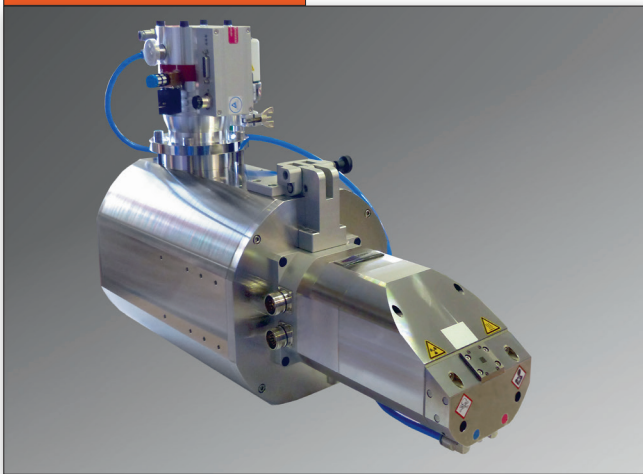


MICROFOCUS X-RAY TUBES

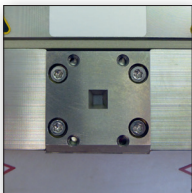
PRODUCT LINE CT PLUS



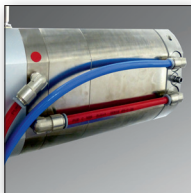
Product image



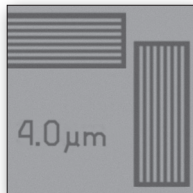
Microfocus X-ray tube XWT-300-CT Plus



XWT-300-CT Plus with new collimator



XWT-300-CT Plus with new cooling circuit



JIMA resolution 4.0 μm: 225kV - 300kV tubes

Technical data

| Data | Product line CT Plus | | |
|--|----------------------|------|------|
| Max. voltage (kV) | 225 | 240 | 300 |
| Min. voltage (kV) | 20 | 20 | 50 |
| Max. current (mA) | 3.0 | 3.0 | 3.0 |
| Min. current (mA) | 0.05 | 0.05 | 0.05 |
| Max. power, emission (Watt) | 500 | 500 | 500 |
| Max. power, target (Watt) | 450 | 450 | 450 |
| JIMA resolution (μm) | 4.0 | 4.0 | 4.0 |
| Tube type | Reflection | | |
| Target type | High Power | | |
| Target material | Tungsten | | |
| Min. focus-object-distance (FOD, mm) | 8.0 | 8.0 | 8.0 |
| Opening angle (approx. °) | 40 | 40 | 40 |
| Mounting length incl. 90° HV plug (mm) | 790 | 881 | 916 |
| Tube weight (approx. kg) | 50 | 50 | 69 |

Highlights

- ▶ Paramount tube power 500 Watt also at maximum voltage of 300 kV
- ▶ Internal cooling of the tube head and turbo pump for highest stability of focal spot position increases accuracy of CT scans
- ▶ Reduced heel effect and round focal spot by redesigned reflection target
- ▶ Automatic Intensity Control (AIC) for continuous intensity of radiation
- ▶ Unlimited lifetime

Scope of delivery

- ▶ Open microfocus X-ray tube with reflection target, turbo vacuum pump, vacuum gauge, and electronic drive unit
- ▶ Internal liquid cooling of the tube head, target and turbo pump
- ▶ High voltage generator and high voltage cable
- ▶ Prevacuum pump with vacuum hose
- ▶ Peltier-type cooler with hoses and cooling agent
- ▶ Tube controller, power supplies, and safety relays on 19" mounting panels
- ▶ Collimator with filter holder (including Al, Sn, and Cu filters of different thicknesses)
- ▶ Set of cables for electrical connection of X-ray tube and components
- ▶ Spare parts case, documentation, operating software

See our new catalogue **Options and Accessories** to find additional auxiliary equipment for your X-RAY WorX tube.

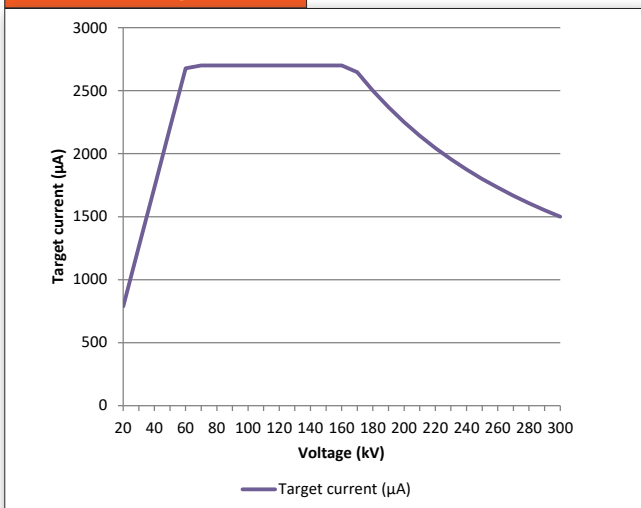
Product Line CT Plus

Focal spot size

| | | Voltage [kV] | | | | | | |
|------------------|-----|--------------|-----|-----|-----|-----|-----|-----|
| | | 60 | 100 | 150 | 190 | 225 | 240 | 300 |
| Target power [W] | 50 | 60 | 60 | 60 | 55 | 40 | 40 | 40 |
| | 100 | 110 | 105 | 100 | 85 | 80 | 75 | 75 |
| | 150 | 140 | 175 | 145 | 125 | 125 | 125 | 125 |
| | 200 | | 250 | 190 | 170 | 170 | 170 | 170 |
| | 250 | | 340 | 235 | 235 | 225 | 225 | 225 |
| | 300 | | | 300 | 300 | 285 | 285 | 285 |
| | 350 | | | 370 | 370 | 340 | 340 | 340 |
| | 400 | | | 450 | 450 | 400 | 400 | 400 |
| | 450 | | | | 500 | 450 | 450 | 400 |

Focal spot sizes in microns (μm) based on measurements according to EN 12543-5.

Power rating chart



Tube dimensions

